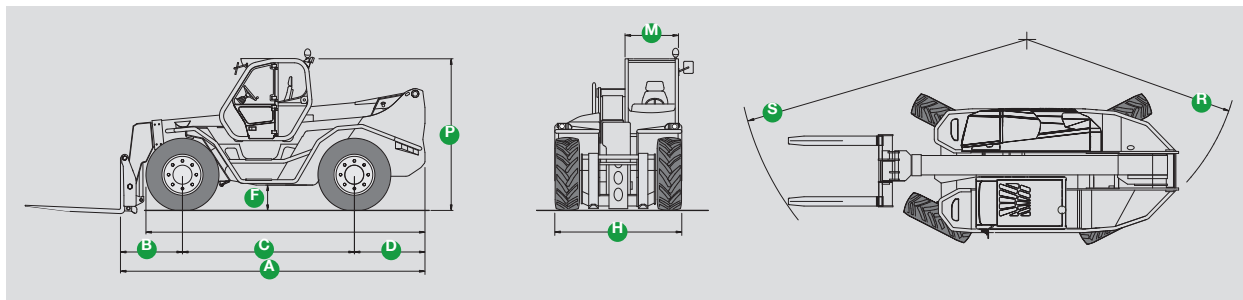


# PANORAMIC P 50.18 HM



**MERLO**

*BUILDING WITH CONFIDENCE.*

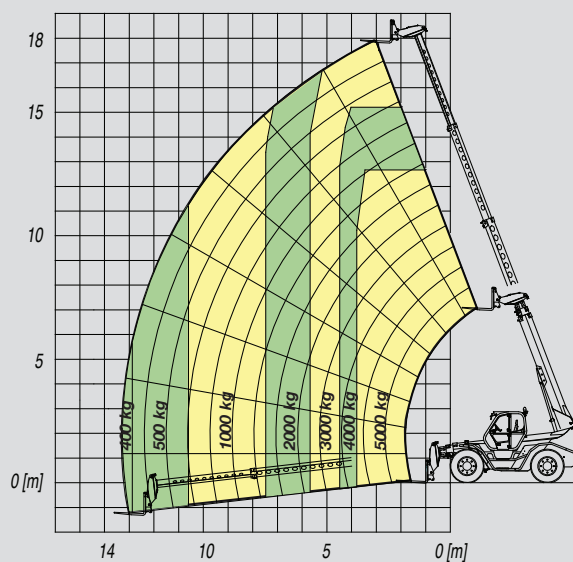


▲ The **Panoramic P 50.18 HM** is a mighty telescopic handler that **guarantees performances** at the top of its category. Its dimensions:

|               |      |
|---------------|------|
| <b>A</b> (mm) | 6130 |
| <b>B</b> (mm) | 1550 |
| <b>C</b> (mm) | 3240 |
| <b>D</b> (mm) | 1335 |
| <b>E</b> (mm) | 5235 |
| <b>F</b> (mm) | 450  |
| <b>H</b> (mm) | 2400 |
| <b>M</b> (mm) | 995  |
| <b>P</b> (mm) | 2850 |
| <b>R</b> (mm) | 4300 |
| <b>S</b> (mm) | 5440 |

◀ The **hydraulic extension mechanism** which controls the contemporary and progressive movements of all the sections of the telescopic boom, the hydraulic hoses and the electrical cables are totally enclosed within the boom assembly to ensure the maximum **protection and reliability**.

|   |          |
|---|----------|
| ▶ Maximum load capacity (kg)            | 5000     |
| Maximum lift height (m)                 | 17.8     |
| Boom sideshift (mm)                     | ±440     |
| Maximum speed (kph)                     | 40       |
| Euro 3 turbo intercooler engine (kW/CV) | 107/145  |
| Electronic Merlin System                | Standard |
| Load-Sensing hydraulic system           | Standard |
| Hydrostatic transmission                | Standard |



**MERLO S.P.A.**

Via Nazionale, 9 - 12010 S. Defendente di Cervasca - Cuneo - Italia

Tel. +39 0171 614111 - Fax +39 0171 684101

[www.merlo.com](http://www.merlo.com) - [info@merlo.com](mailto:info@merlo.com)